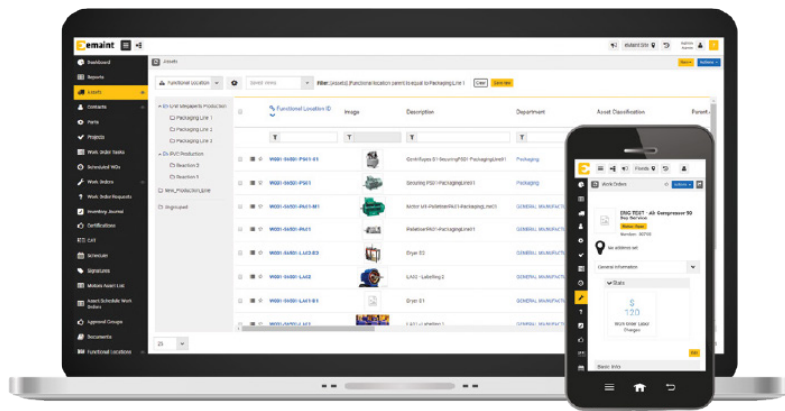


Technical data

eMaint CMMS



What is eMaint?

eMaint computerized maintenance management system (CMMS) software from Fluke is an award-winning solution helping businesses manage enterprise assets, streamline workflows, track inventory, and schedule preventive and predictive maintenance. Thousands of customers worldwide rely on eMaint to manage their maintenance and reliability processes, including manufacturing, facilities, fleet, oil and gas, food and beverage, government, healthcare, education, and other industries.

What is a CMMS and why is it needed?

A CMMS automates maintenance functions and is used in industrial settings where any type of equipment or asset requires maintenance and upkeep. CMMS software solutions provide a central repository for all asset data, work orders, materials and inventory, and other vital information for maintenance teams. Spending less time on administrative tasks allows teams to devote more time to achieving reliability goals. More and more companies of all sizes are switching to a CMMS instead of using manual methods to track and organize maintenance information.

The eMaint web-based, SaaS solution can be accessed from devices such as PCs, smartphones, and tablets. eMaint subscriptions include unlimited helpdesk support (via phone, email and live chat), daily data backup, and software updates and enhancements. All eMaint Professional and Enterprise subscriptions receive a dedicated Customer Success Manager.

Typical capabilities of a CMMS:

- Enterprise asset management
- Predictive maintenance
- Preventive maintenance
- Labor tracking and reporting
- Work order management
- Maintenance scheduling and planning
- Inventory management and control

Top reasons why eMaint is chosen as the CMMS solution:

1. Winner of multiple awards and recognition for CMMS
2. Software-as-a-service (SaaS) subscription model
3. Extremely flexible and configurable system
4. Backed by 30+ years' experience helping companies
5. Major emphasis on pre- and post-sale services
6. Multilingual and global support
7. Free, extensive online training resources
8. In-person training and conferences

Global languages support

eMaint currently can be operated in the following languages: English, Spanish, Portuguese, French, German, Italian, Dutch, Turkish, Bulgarian, Chinese (Simplified), Czech, Estonian, Georgian, Hungarian, Indonesian, Japanese, Kazakh, Korean, Polish, Romanian, Russian, Serbian, Slovak, Thai, and Ukrainian.

Training and support

Live product support is available in multiple languages: German, French, English, Spanish, Portuguese.

World-class training and support includes:

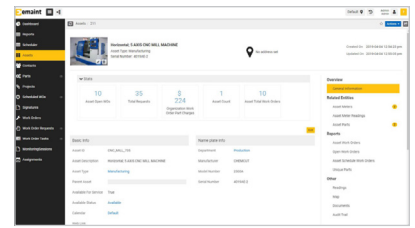
- In-person boot camp classes
- eMaint University online learning portal with recorded training sessions and tutorials
- Live web workshops

How is eMaint implemented?

eMaint SaaS is a cloud-based application, so implementation is designed to be a straightforward process that is quick and painless. We assign an implementation team to you to prepare for taking the system live. Our team will configure and set up the system the way you want to see it when you go live. We offer a variety of pre-implementation services to ensure your success.

Pricing

eMaint has affordable tiered monthly pricing based on the level of functionality needed and start as low as 69 USD/59 GBP/69 EUR per month.

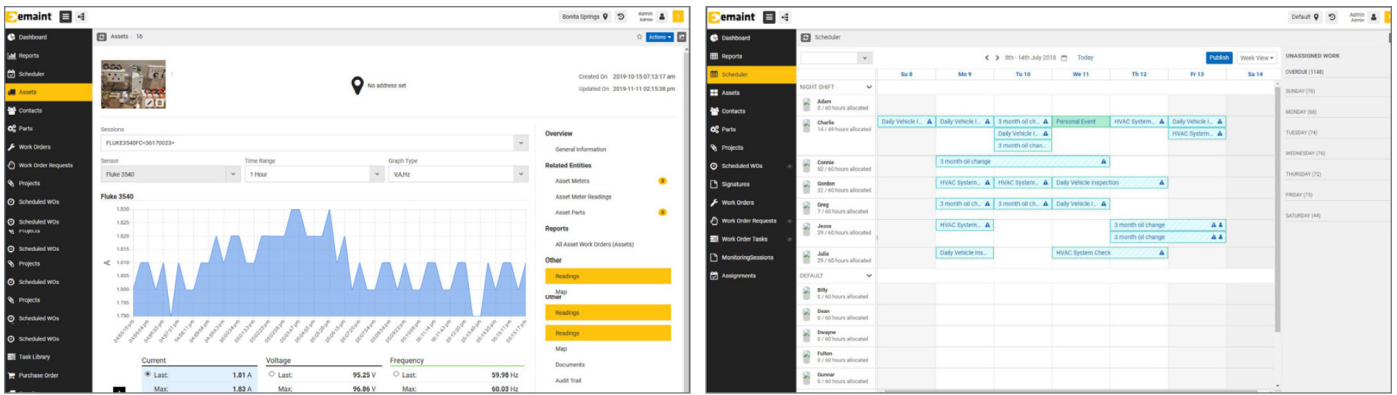


Nichols Farms increases work order completion rates by 400% using eMaint CMMS

“World-class maintenance is what we strive for, and world-class maintenance programs use a CMMS.”

Christopher Kennedy
Maintenance Planner,
Nichols Farms

Team	Professional	Enterprise
Prices listed are per user, per month and in USD/GBP/ EUR		
69/59/69	85/65/80	120/90/110
3 user pack	3 or more users	5 or more users
Standard CMMS Features	Includes everything in Team Tier Plus:	Includes everything in Professional Tier Plus:
Unlimited Helpdesk Support	Advanced Feature Set	Unlimited Work Request User Logins
Software Updates & Upgrades	Dedicated Account Management	Access to Web API
24/7 Online Training	Interactive Image Mapping	Multi-site Toolkit
Access on Mobile Devices	Automated Workflows	Single Sign-on
	Work Request Options	Xcelerate User Conference Discount
	Sandbox Staging Account	



What our customers say

Dana Inc. Successfully Migrated from Legacy System and Achieved Rapid eMaint Adoption

“When we rolled out the eMaint system, we started with the basics and then added more components over time. This process, coupled with a three-day eMaint training, made it a successful transition for our entire maintenance team.” **Robert McKenna, Manufacturing Asset Management Lead, Dana Inc.**

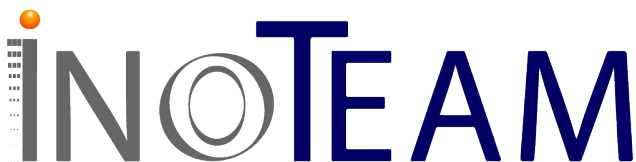
eMaint CMMS helps cardboard producer meet soaring product demands

“The first year I was here after I put eMaint in, year-over-year we increased about 14%. The year after that we increased about 6%, and this past year we increased 8%. That’s over 20% in the last three years, and I would say a good portion of that is because we have our maintenance a little bit more in control now.” **Bill Strachan, Director of Manufacturing, Tencorr**

Snack foods manufacturer counts on eMaint CMMS to standardize

“The eMaint system is easy to use. Once we started using the capabilities, we understood and exploited more of its functionality. The more we’ve used it, the more we’ve seen a return on investment.” **Dee Robison, eMaint CMMS Administrator, Monogram Foods**

Contact us to schedule a demo.



INOTEAM

Le Condor A103
410, Avenue des Près d'Arènes
34070 Montpellier, France

+33 4 67 07 08 44
www.inoteam.fr

Fluke. Keeping your world up and running.™

emaint.com

©2026 Fluke Corporation.
Specifications subject to change without notice.
260119-en

Modification of this document is not permitted
without written permission from Fluke Corporation.

FLUKE